





Instruction manual for LED light panel Solight WO761, WO763

Dear customer,
thank you for purchasing our product. For its safe and full functioning, please read these instructions carefully and stick to them to avoid product misuse or damage. Please prevent unauthorized use of this appliance and always observe all rules for using electric appliances. Keep these instructions for future reference. The installation must be performed by qualified personnel only.

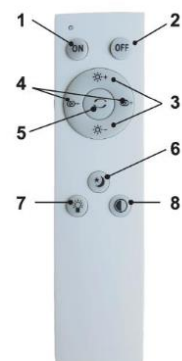
Power	WO761	WO763
	24W	24W
Dimensions (mm)	390 x 65	370 x 100
IP protection	IP20	IP20

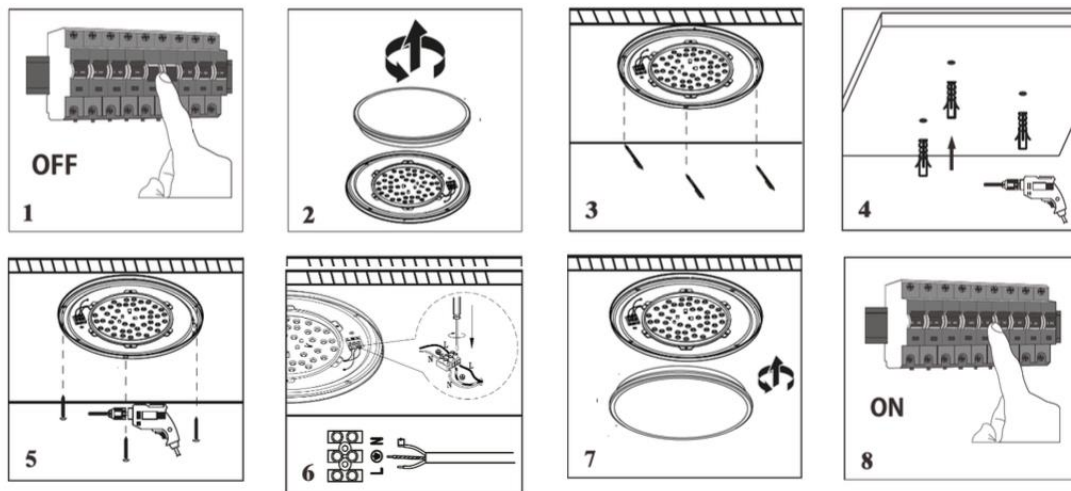
Packaging content
 1x
 1x

Memory function for control with a normal switch: LED lighting allows you to switch preset modes with a normal switch. If you leave a delay of about 20 seconds after the light has been switched off, the lighting will come on in the last used mode.

Memory function for control with a remote control: The light will return to its last used mode when switched on only if the previous mode has been set by buttons 3, 4 and 6.

1. Turning on
2. Turning off
3. Smooth brightness change
4. Smooth light temperature change
5. Step by step change of functions of buttons 3 and 4
6. Night more
7. Preset brightness
8. Preset light temperature





1. Turn off the power supply
2. Open the light panel
3. Use the back board to mark three holes for drilling
4. Drill the holes and insert the dowels
5. Screw the back board
6. Connect the supply cable to the terminal block
7. Close the light panel
8. Turn on the power supply

The light source of this light is not replaceable, after the end of its lifespan it is necessary to replace the entire light and dispose of it in the place designated for it. This product contains a light source which, for design reasons, cannot be exempted for verification and therefore the whole product is considered to be a light source.

Manufacturer is not responsible for any damage caused by improper use.

